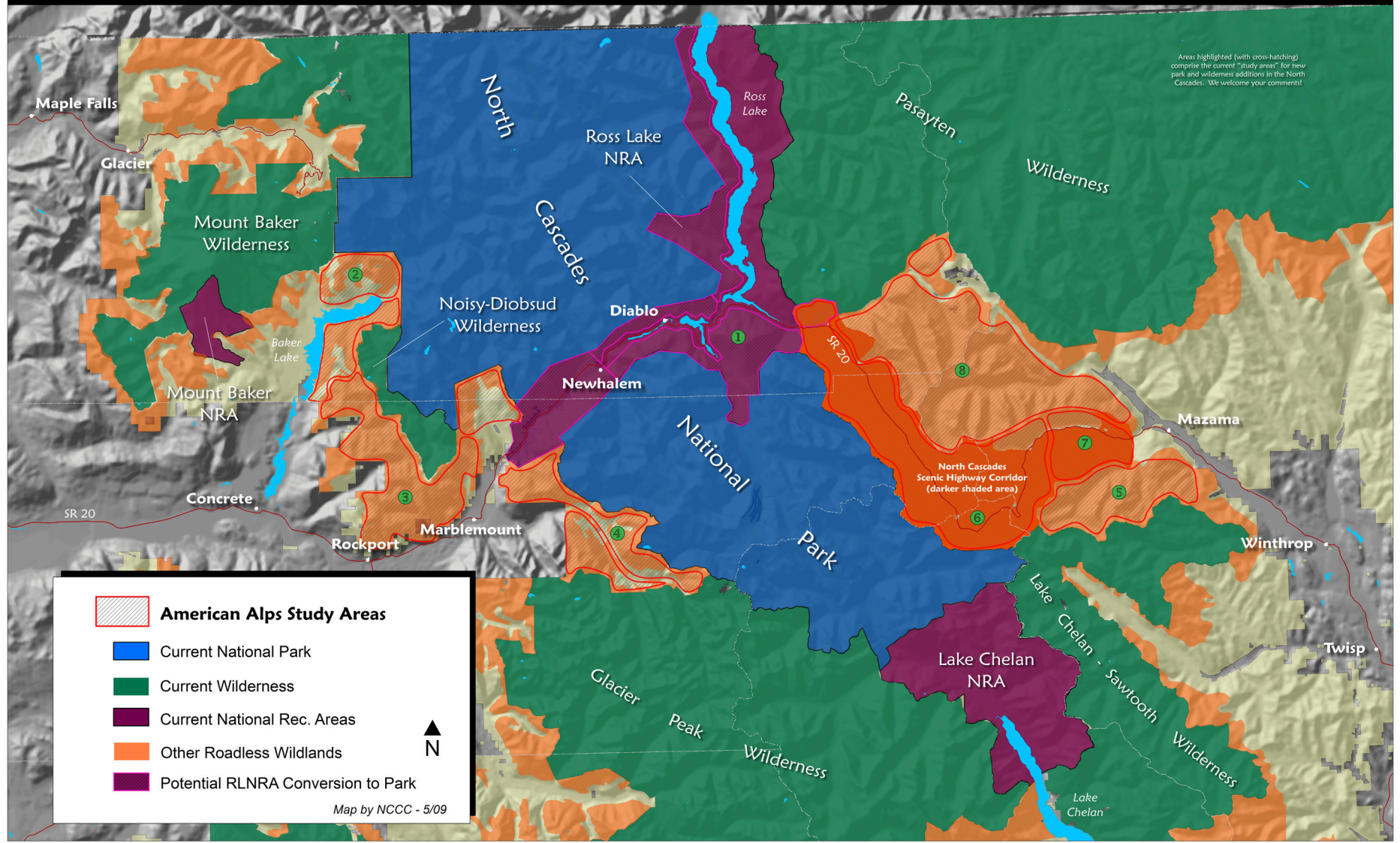




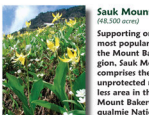


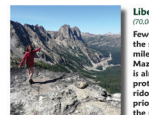
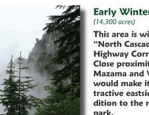

AMERICAN ALPS LEGACY PROJECT - STUDY AREAS



Areas highlighted (with cross-hatching) comprise the current "study areas" for new park and wilderness additions in the North Cascades. We welcome your comments!

- American Alps Study Areas**
- Current National Park**
- Current Wilderness**
- Current National Rec. Areas**
- Other Roadless Wildlands**
- Potential RLNRA Conversion to Park**

Map by NCCC - 5/09

 <p>Ross Lake NRA-to-Park (60,000 acres) The 1968 Ross Lake NRA boundary does not reflect today's needs. Some areas west of Ross and Diablo Lakes, along the highway, and at Thunder Creek could be added to the national park. Areas east of Ross Lake could remain available for hunters.</p>	 <p>Baker River/Baker Lake (20,000 acres) Along the Baker River and Baker Lake, giant trees, a steep-walled canyon, the river's deep white-water, plus a popular three-season trail make this an attractive addition to North Cascades National Park.</p>	 <p>Sauk Mountain (16,000 acres) Supporting one of the most popular trails in the Mount Baker region, Sauk Mountain comprises the largest unprotected roadless area in the entire Mount Baker-Snoqualmie National Forest. It should be protected as park or added to Noisy-Diobdud Wilderness.</p>	 <p>Cascade River (20,000 acres) Old-growth forests, a crashing river, numerous trailheads, great camping and world-class scenery make this a perfect candidate for addition to the national park. The current boundary is so close already!</p>	 <p>Sawtooth (21,600 acres) Rugged ridges and the deep valley of Cedar Creek offer very high quality wilderness east of the Cascade Crest - a well deserved addition to the Lake Chelan-Sawtooth Wilderness.</p>	 <p>Liberty Bell (70,000 acres) Few people realize that the spectacular thirty-mile drive between Mazama and Ross Lake is almost entirely unprotected! The corridor should be a high priority for addition to the park.</p>	 <p>Early Winters (14,000 acres) This area is within the "North Cascades Scenic Highway Corridor." Close proximity to Mazama and Winthrop would make it an attractive eastside addition to the national park.</p>	 <p>Golden Horn (71,000 acres) High, craggy summits above broad valleys of virgin forest, the Golden Horn region is the last great wilderness in the North Cascades yet to be protected. It also encompasses headwaters of the Skagit and Methow Rivers.</p>
---	---	--	--	--	---	---	--